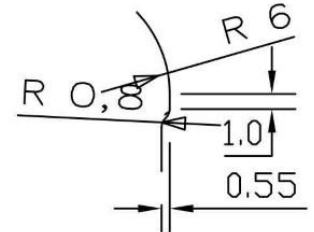
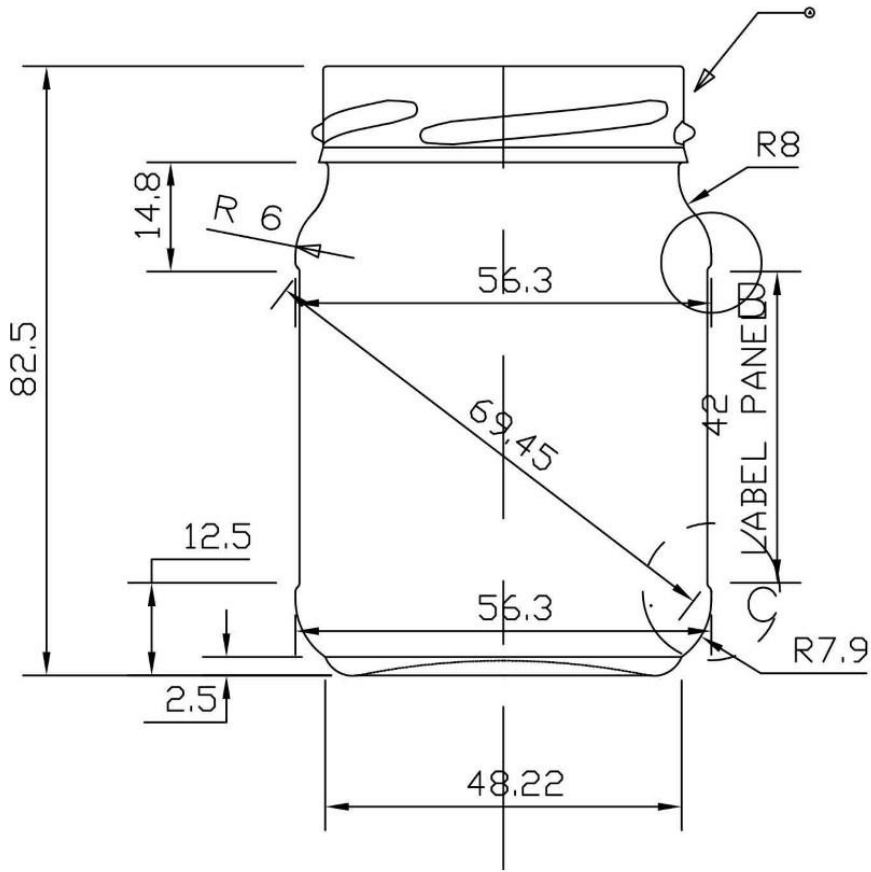
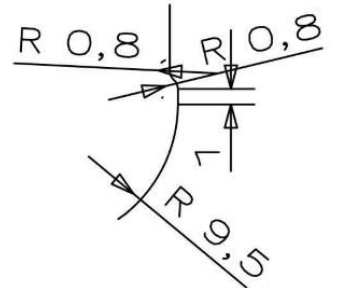


FINISH : TO 53-FD 136 AS PER WHITE CAP SPEC'S.

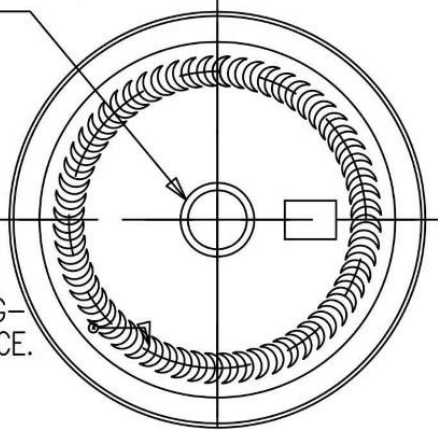


DETAIL B  
SCALE 2:1



DETAIL C  
SCALE 2:1

EMBOSS THE MFGR'S LOGO/  
AND CAV.NO



CRESCENT KNURLING-  
ON BEARING SURFACE.

CUSTOMER APPROVAL : \_\_\_\_\_  
  
DATE : \_\_\_\_\_

PROCESS	DG-PB										
MINIMUM THROUGH BORE	N.A								PRODUCT DESIGN / R&D		
VACITY	N.A										
GLASS COLOUR	FLINT	No. REV. No.			REVISION			DATE REV.BY			
MAXIMUM DEPTH OF STANDARD ENGRAVING	0.4	FILL-POINT CAP. N.A			PROJECT DETAIL'S			PRODUCT NAME		140ml KAMA JAR	
MAX. GAS VOLUMES	N.A	BRIMFUL CAP. 140±6ml						CUSTOMER:			
REF.DRG No. : CONCEPTUAL	WEIGHT	85±5gr						DRAWN BY:		DATE:	CHECKED:
PLANT	FINISH	T0-53 FD138 AS PER WHITE CAP						APPROVED BY:			
	SURFACE TREATMENT	No						SCALE		DRAWING No.	
								NTS		A3 Rev.	
										00	